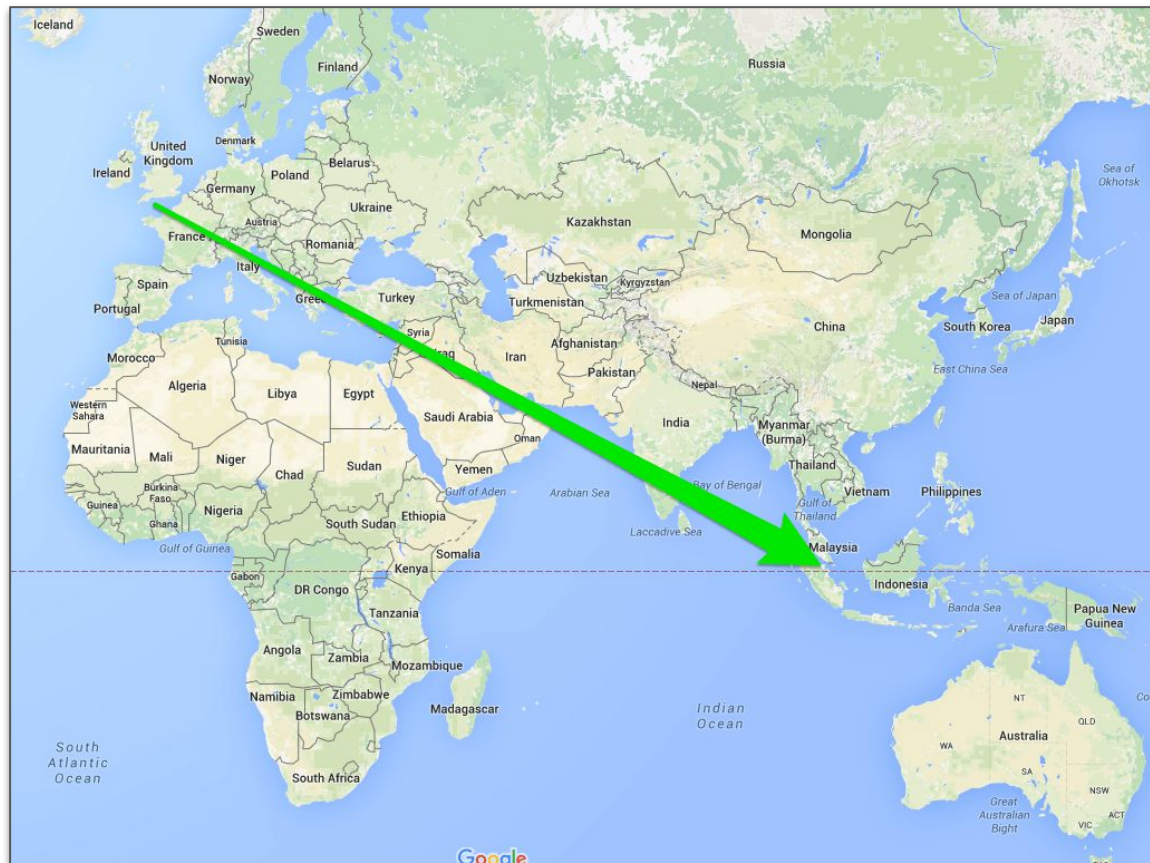


G4MRE Remote

10,800km UK↔SG

SARTS Presentation and
Demo 2025-08-29

Hugh Mason
9V1SA / G4MRE / AI7QX



Before the Demo ...

Why I did this: a) I wanted to get back to CW.
b) Closest I will ever get to building a space probe.

How I did this: First at a remote off-grid site in the Mendip Hills, UK.
Second at a house on-grid in Bath, Somerset.

What I learned: I will share at the end



How it Started

G3TKF

England



ROBIN THOMPSON

Saltford Bristol BS31
England

Email: Use mouse to view..

Ham Member Lookups: 26991

Label

Biography

Detail

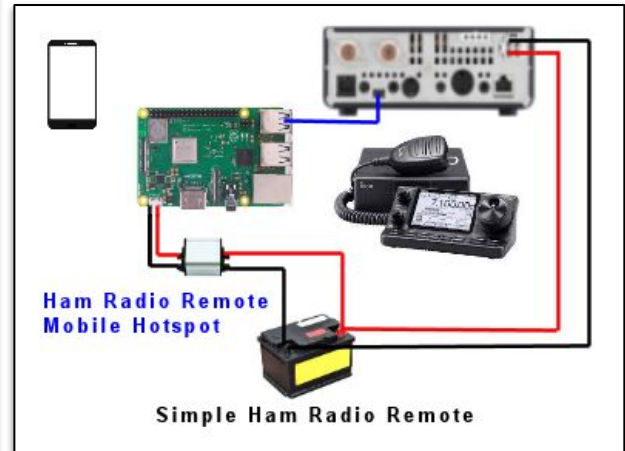
Logbook

Log a NEW contact with :

G3TKF

First licenced in 1964. Active on all bands, but main interests are 160m and 80m RSGB CC contesting. Active member of "G6YB" Bristol Contest Group.

Due to heavy QRM "in the city" I often use a remote rig . An IC7100 feeding a low doubtlet . Generally active on CW HF bands, and a mixture of everything else (yes even FT8) on the others.



There are Many Visitors to G3TKF



You are Never Alone in a Remote Ham Radio Shack

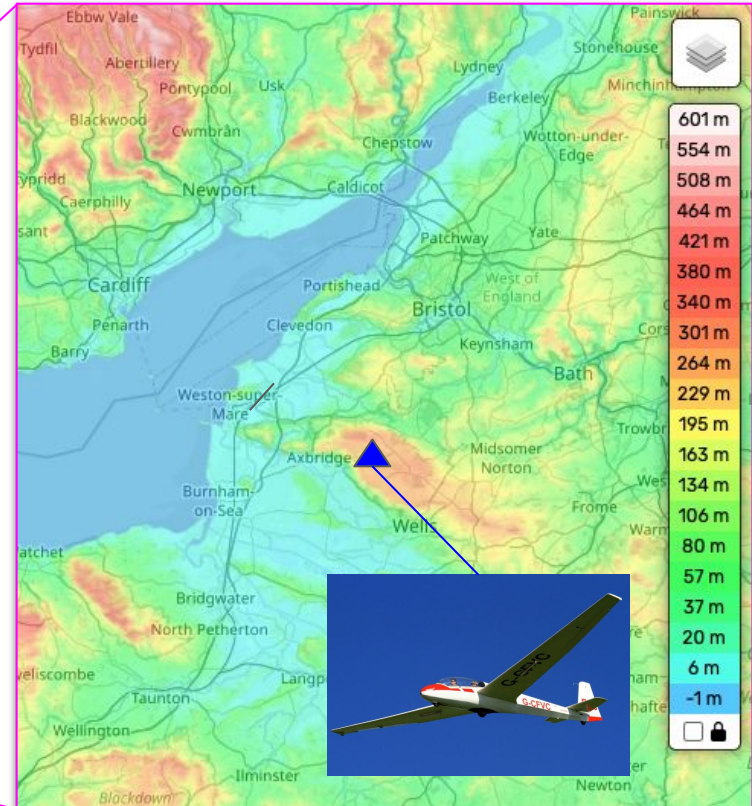
2024-01-05 19:38:46



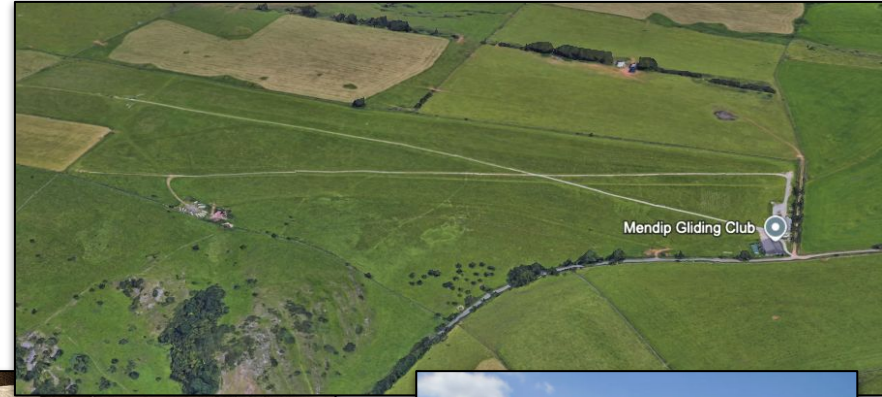
Challenge 1: Find Location. Old airfields? Farm?



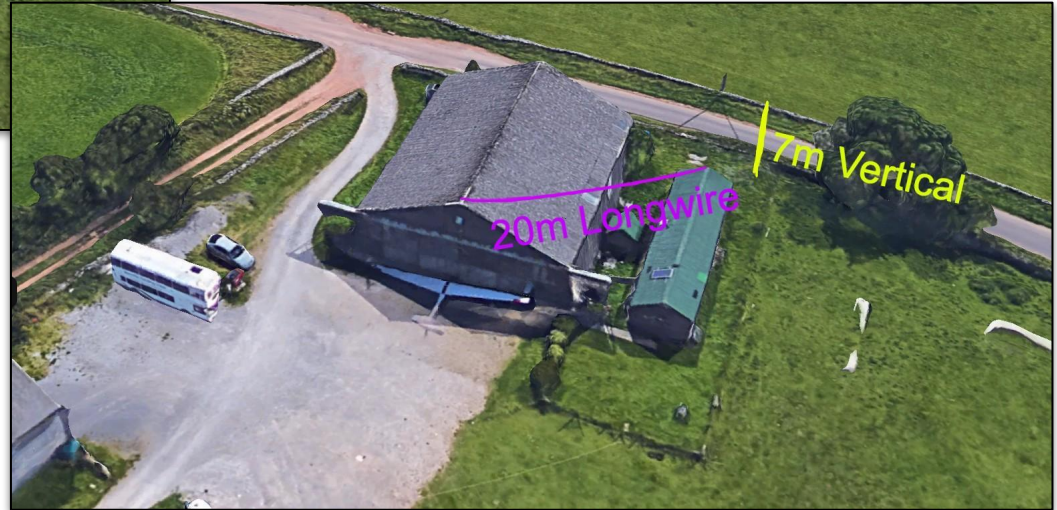
The image is a composite of two maps. The left map is a general map of Europe, showing the British Isles, Scandinavia, and parts of Western Europe. A red location pin is placed on the Mendip Gliding Club in England. The right map is a detailed topographic map of the Mendip area, showing the Mendip Hills and surrounding towns like Wells and Axbridge. A blue arrow points to the Mendip Gliding Club. A vertical height scale on the right side of the right map ranges from -1m to 601m. A small inset image of a glider is also present on the right map.



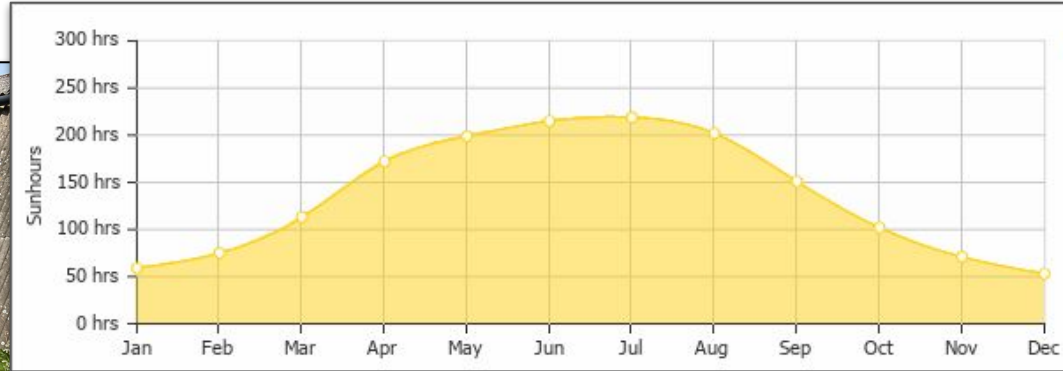
Ulu, Off-Grid. Famous for Cheese. Patrolled by Sheep



Challenge 2: Can It Work for the Club and me?



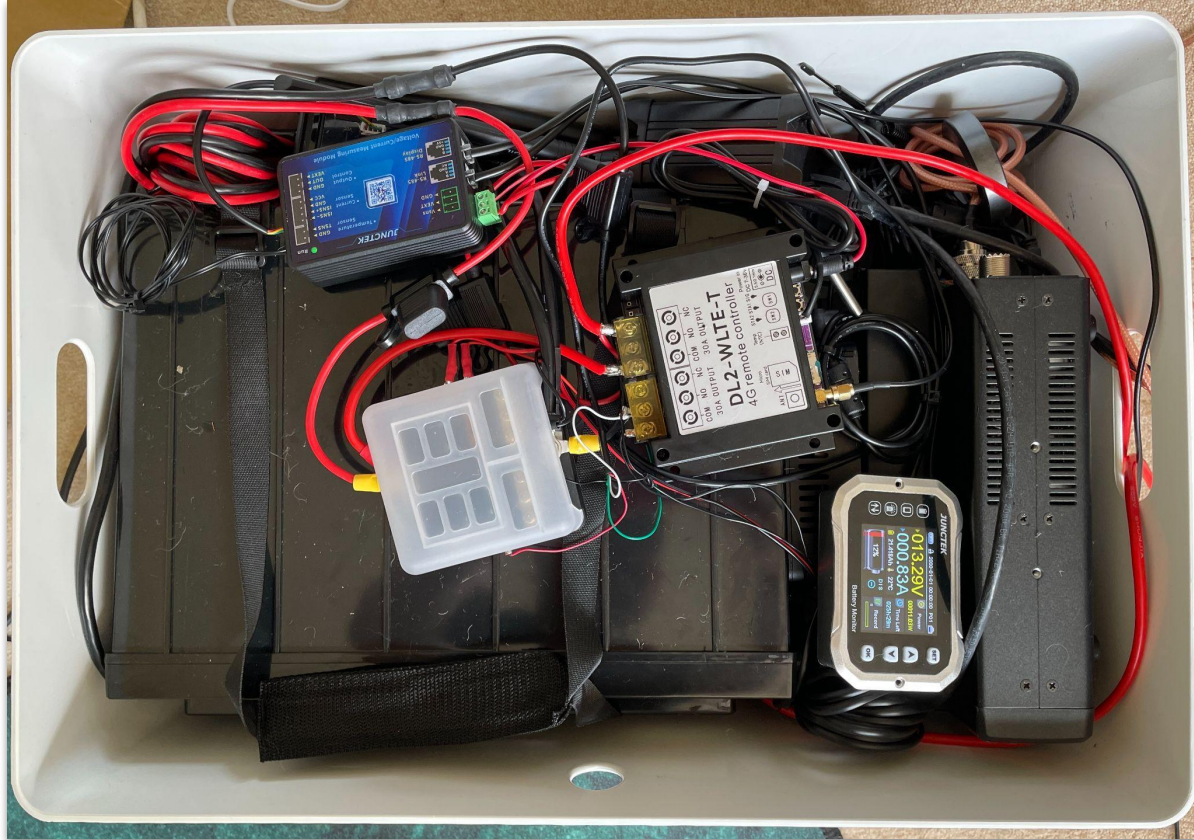
Challenge 3: Power, Especially in Winter



Challenge 4: Remote Shut-off and Internet



Challenge 5: Assembly with the Radio



Installation with G3XOD, G3TKF



View From the Antenna



Can Check the Antenna has not Blown Away



... and that the Solar Panels look OK



Then my Wife Bought a Place in Bath to Renovate



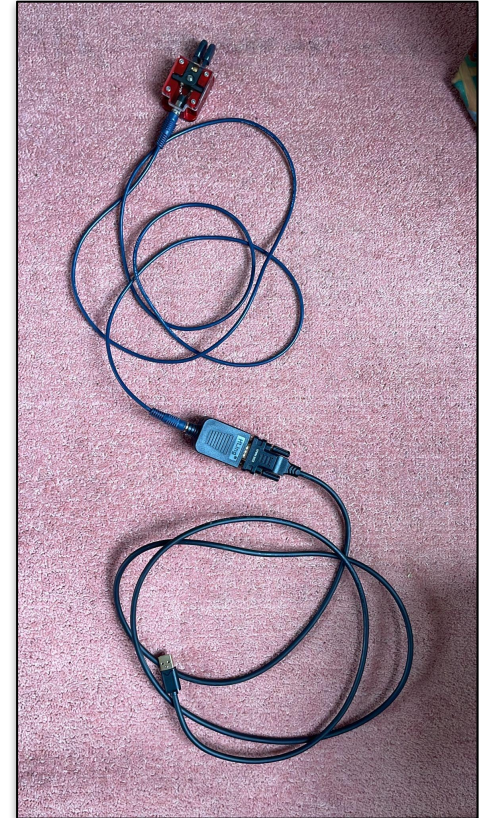
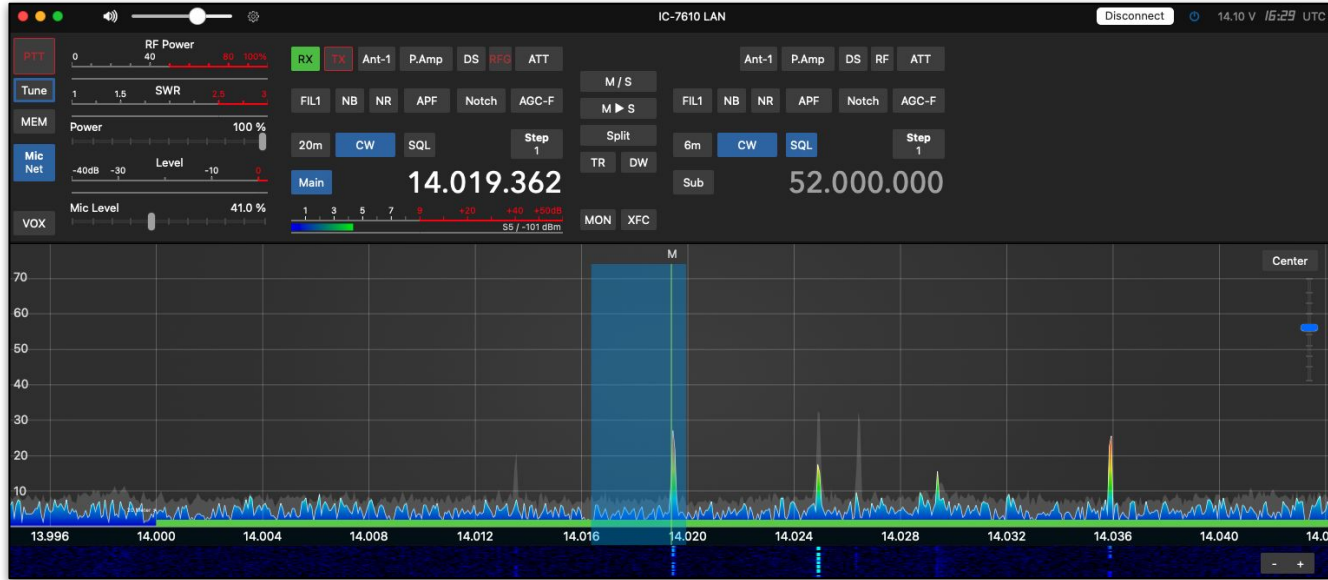
27m Doublet, Centre Fed



Another GSM Power Switch. IC-7610 Wired to Internet



SDR-Control, USB keying, RC-28 knob



Challenges Fixed and Remaining

Fixed	Still to fix
Configuration and Integration	CW dropout on SDR-Control
Mendips Charge Controller	Mendips site ATU
CGNAT / Fixed IP SIM costs	Internet latency, jitter: 33wpm dit=transit time UKSG
Remote SMS sending	Reliability / Servicing at a distance
Mendips temperature control, Connectivity	Backup remote software
Seeing inside the station remotely	LF / VLF / VHF / UHF

What have I learned so far?

- It's a fascinating, ongoing challenge
- Lots of people are trying this as QRM in cities goes up.
- There are many options from \$ to \$\$\$\$\$.
- Off-grid is super hard but fun.
- Only being able to visit with 6 month gaps makes it harder.
- CW over internet is way more complex than it first appears.



Thank you to the Many Friends who Made This Possible

G3TKF
G3XOD
G4SND
G4IRN
S53R
9V1YC
9V1VV
Tony Carr
Noah Crook
Tim Taylor
G3XTN
Mendip Gliding Club

