



**James, 9V1YC  
setting up the  
Pulau Ubin SDR**

# **From Concrete Jungle to Clear Sky** **SARTS Pulau Ubin** **WebSDR takes Dxing** **for Members to a New** **Level**

---

**Gopalan Vedartham**  
**9V1AZ**

# The Problem

---

- On FT8, our signals from our QTH typically travels further than where we can receive signals from.
- I typically get better signal reports than what I give to other stations.
- If we could improve our receive Antenna /setup OR Eliminate local RF Noise. our DX performance would be much better

# The Solution-

---

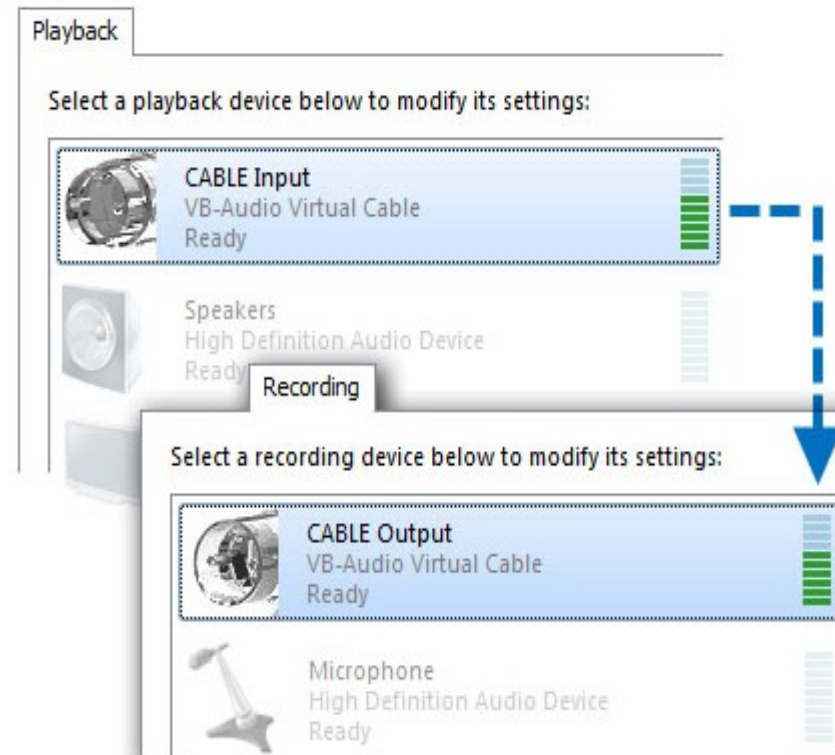
**Use SARTS Pulau Ubin WebSDR as your Rx and Transmit from your own TX.**

<b>WebSDR</b>	<b>Reports- 24hrs</b>	<b>Reports 1 Week</b>	<b>Countries 1 Week</b>
<b>9V1RS</b>	<b>15,527</b>	<b>101,533</b>	<b>145</b>
<b>9V1KG-1</b>	<b>6,958</b>	<b>46,248</b>	<b>130</b>
<b>9V1HP</b>	<b>3,792</b>	<b>29,535</b>	<b>56</b>

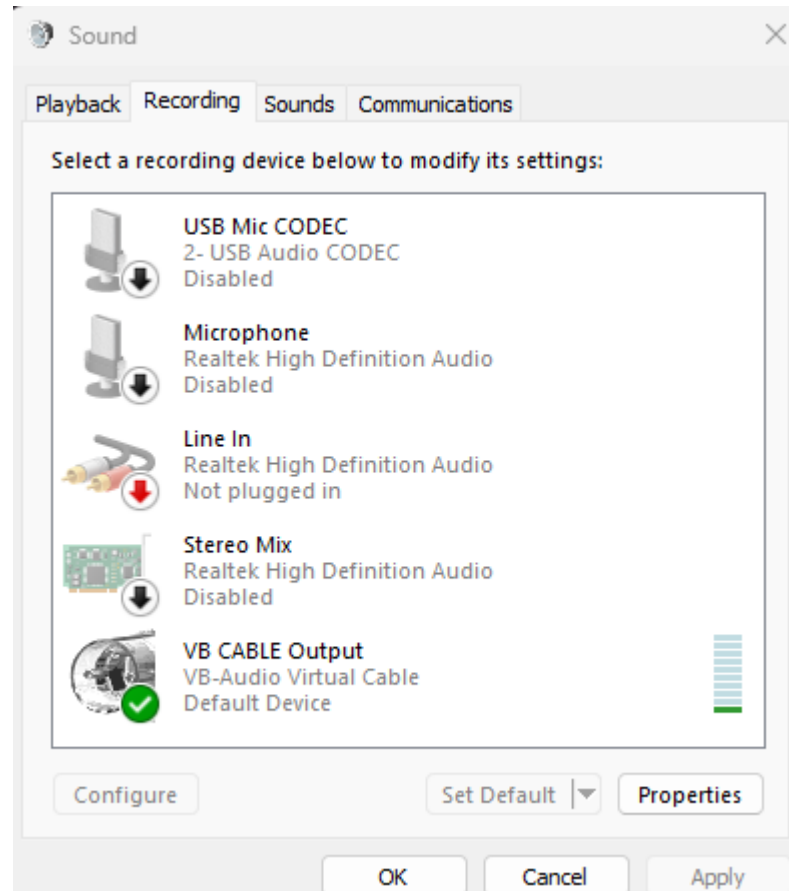
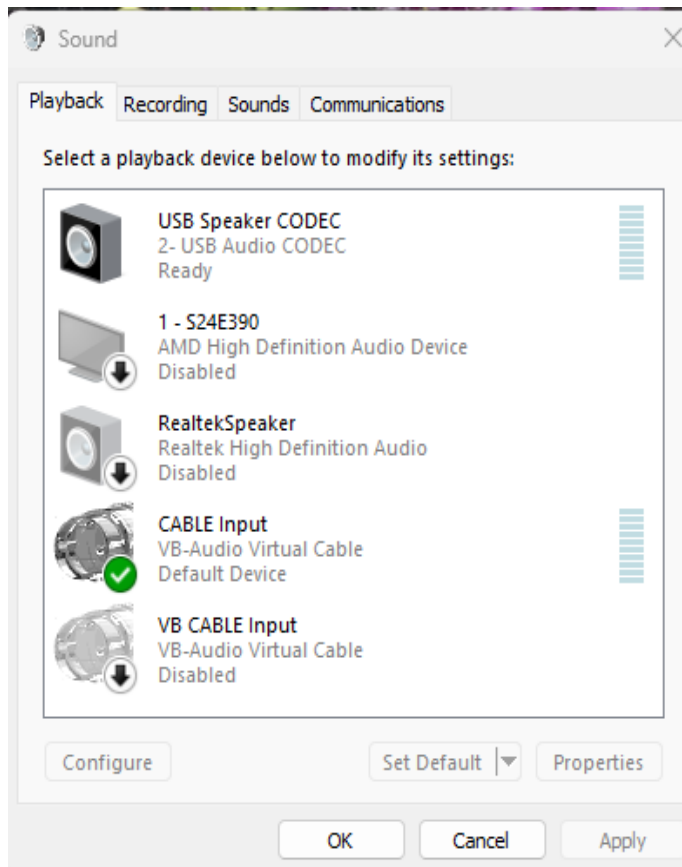
Data from PSK reporter-07:00Z 14<sup>th</sup> Nov 2024

# How use WSJTX etc on Win 11 PC

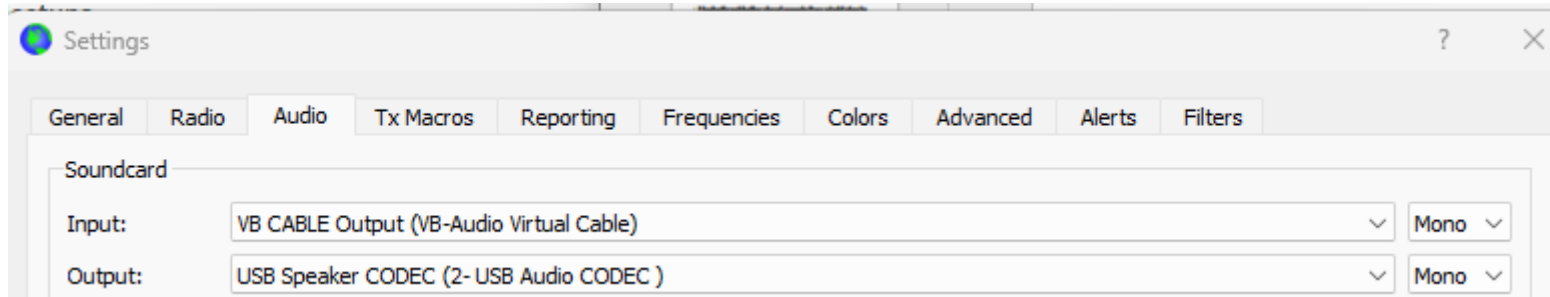
- Download VB- Audio Virtual Cable software  
<https://vb-audio.com/Cable/>
- Install the software on your PC. You should see a new Audio device in the Control Panel Sound Settings in the Playback and Record Tab



# Control Panel Sound Settings



# WSJTX Audio Setting



## *Overview of Audio routing*

***Receive Route*** P Ubin WebSDR on Chrome Audio output → VB Audio Cable Input (Playback Tab on CP) → VB Audio Cable Output (Recording Tab on CP) → WSJTX Input

***Transmit Route*** -WSJTX Output → USB Speaker CODEC to Transceiver (Transmit Route is unchanged from normal setting)

*CP = Control Panel*

# Contests Awards etc

---

**Eligibility of a split setup for awards such as DXCC as well as for participation in various contests needs to be examined.**

**Pulau Ubin WebSDR is within the same Maidenhead Grid OJ11, as rest of Singapore (except a small bit of OJ 12 in the newly reclaimed land East of Changi Airport.**

**Though the TX, RX and the operator are all close to each other, all three may be considered as not co-located.**